

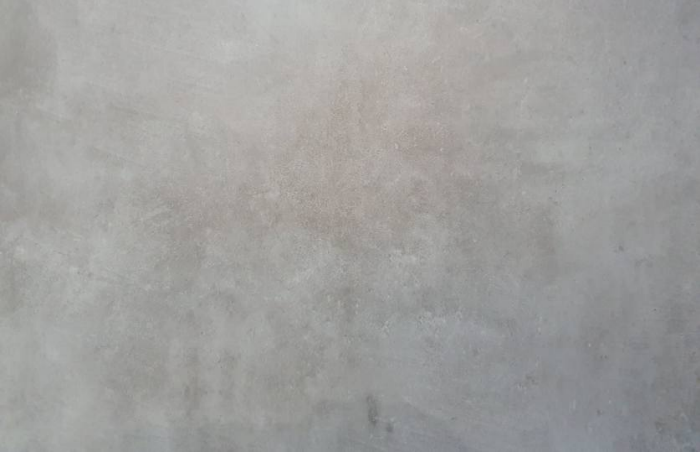


Gumbati Art was founded in 2020 and represents a team that takes care of the renovation and amenities of your apartment.

Gumbati Art combines all those services that are needed to perform the work efficiently, with the highest quality, and to deliver it right on time.



# TYPES OF RENOVATION WORKS



## GREEN FRAME - MIDDLE CLASS

1 m2 = 170\$ Up to 30 sq/m

1 m2 = 150\$ From 30 sq/m

- Removed inner partition (10 cm pumice);
- Internal electrical wiring (minimum 30 points);
- Plastering of the walls;
- Installation of circuit breakers, rosette boxes and electric DB boxes;
- Wiring of Internet and TV cables;
- Internal drainage of water sewerage, with plastic pipes;
- Ventilation duct systems in bathroom and kitchen;
- Packing of ventilation and sewerage pipes with sound-insulating stone wool.
- Installation of central heating system (with plastic pipes);
- Arranging the collector system;
- Screed floor;
- Arrangement of bath ceilings with green plasterboard tiles;
- Covering the ceiling with white plasterboard tiles;
- Garbage disposal, transportation of materials.



## GREEN FRAME - PREMIUM CLASS

1 m2 = 280\$ Up to 30 sq/m

1 m2 = 250\$ From 30 sq/m

- Removed inner partition (10-15 cm pumice);
- Internal electrical wiring with **corrugated pipes** (minimum **1 point per 1 sq.m.**);
- Plastering of the walls;
- Installation of circuit breakers (**Brand: Schneider**), rosette boxes, RCD, and DB boxes;
- Wiring of Internet and TV cables.
- Arranging smoke detector-fire alarm cables.
- Internal drainage of water sewerage, with metal-plastic pipes.
- Ventilation duct systems in bathroom and kitchen;
- Installation of central heating system (with plastic pipes);
- Arrangement of the collector system and pump;
- Screed floor;
- Packing of bathroom ceilings with moisture-proof Guardaxis tiles (Brand: Knauf).
- Wrapping the ceiling with **green** plasterboard tiles (Brand: Knauf).
- **Underfloor heating;**
- **Arrangement of pipes for air conditioner and drainage;**
- **Sound insulation of ceilings with stone wool;**
- Garbage disposal, transportation of materials.



# TYPES OF RENOVATION WORKS

## THE SECOND STAGE - THE MIDDLE CLASS

1 m2 = 200\$ Up to 30 sq/m

1 m2 = 180\$ From 30 sq/m

- Painting works;
- Priming of the screed floor.
- Flooring the rooms with laminate (50 GEL per 1 sq/m.);
- Facing the hall with ceramic granite(60 GEL per sq/m.);
- Facing the bathroom with ceramic wall and floor tiles (1 sq/m 40 GEL);
- Cover the shower cabin floor with granite cornice.
- Cover the bathroom floor with insulating materials.
- Installation of the bathroom shower glass (800 GEL);
- Vertical drain for shower (150 GEL)
- Toilet, washbasin (1000 GEL);
- Bath halogens (1 piece for 28 GEL);
- Bath dryer (200 GEL);
- Internal room door (1 piece for 700 GEL);
- Heating boiler, accessories (ECA 1800 GEL);
- Aluminum heating radiators (1 piece for 35 GEL)
- Plastic plinths;
- Arranging curtain rods;
- Basin mixer (2 pieces for 900 GEL);
- Facing the balcony with granite (1 sq/m 40 GEL);
- Garbage disposal, transportation of materials;
- Cleaning.



## THE SECOND STAGE - PREMIUM CLASS

1 m2 = 270\$ Up to 30 sq/m

1 m2 = 250\$ From 30 sq/m

- Painting and decorative works. (**Caparol**);
- Self-leveling flooring.
- Flooring the rooms with laminate (**70** GEL per 1 sq/m.);
- Facing the hall with ceramic granite (**70** GEL per sq/m.);
- Facing the bathroom with ceramic wall and floor tiles (1 sq/m **70** GEL);
- Cover the bathroom floor with insulating materials.
- Installation of the bathroom shower glass (**1300** GEL);
- Arrangement of mirror and accessories in the bathroom (700 GEL)
- Cover the floor of the shower cabin with granite cornice.
- Vertical drain for shower (250 GEL)
- Additional hygienic drain (50 GEL)
- Built-in toilet by the brand **Vitra**, washbasin (**1800** GEL);
- Bath halogens (1 piece 28 GEL);
- Arrangement of the bathroom exhaust hood (100 GEL)
- Bath dryer (**450** GEL);
- Internal room door (1 piece **950**GEL);
- Cladding of the bathroom door bottom with granite.
- Heating boiler, accessories (**BOSCH 2400** GEL);
- Aluminum heating radiators (1 piece **55** GEL);
- **Painted MDF plinths;**
- Arranging curtain rods;
- Built-in basin mixer (2 pieces **1500** GEL);
- Built-in Hygienic basin Mixer (350)
- Facing the balcony with granite (1 sq/m **60** GEL);
- **Installation of one (40 sq/m) air conditioner of the brand York;**
- Garbage disposal, transportation of materials;
- Cleaning.



## TYPES OF RENOVATION WORKS

---

### KITCHEN FURNITURE AND APPLIANCES

**1 m2 = 120\$ Up to 30 sq/m**

**1 m2 = 90\$ From 30 sq/m**

- ▀ Kitchen furniture (material: MDF, laminate)
- ▀ Exhaust hood (450 GEL)
- ▀ Sink (350 GEL)
- ▀ Faucet (250 GEL)
- ▀ Oven (800 GEL)
- ▀ Gas stove surface (800 GEL)
- ▀ Kitchen surface (350 GEL)







KITCHEN

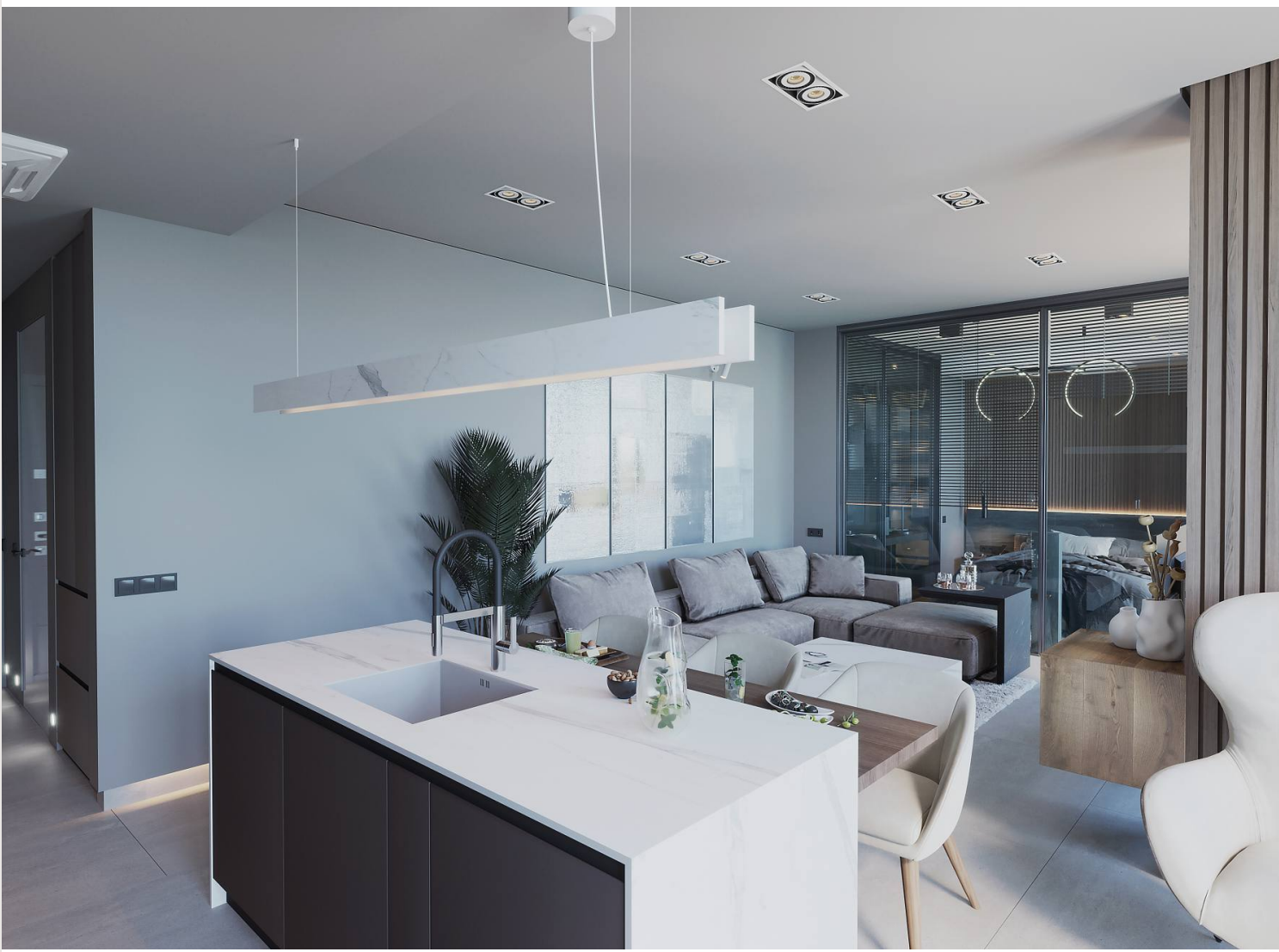






LIVING ROOM





# LIVING ROOM







BEDROOM



# WARDROBE







I BATHROOM







## II BATHROOM






---

**[www.gumbati.ge](http://www.gumbati.ge)**

+995 558 83 87 87

[gumbatiart@gmail.com](mailto:gumbatiart@gmail.com)

  GumbatiGroup

